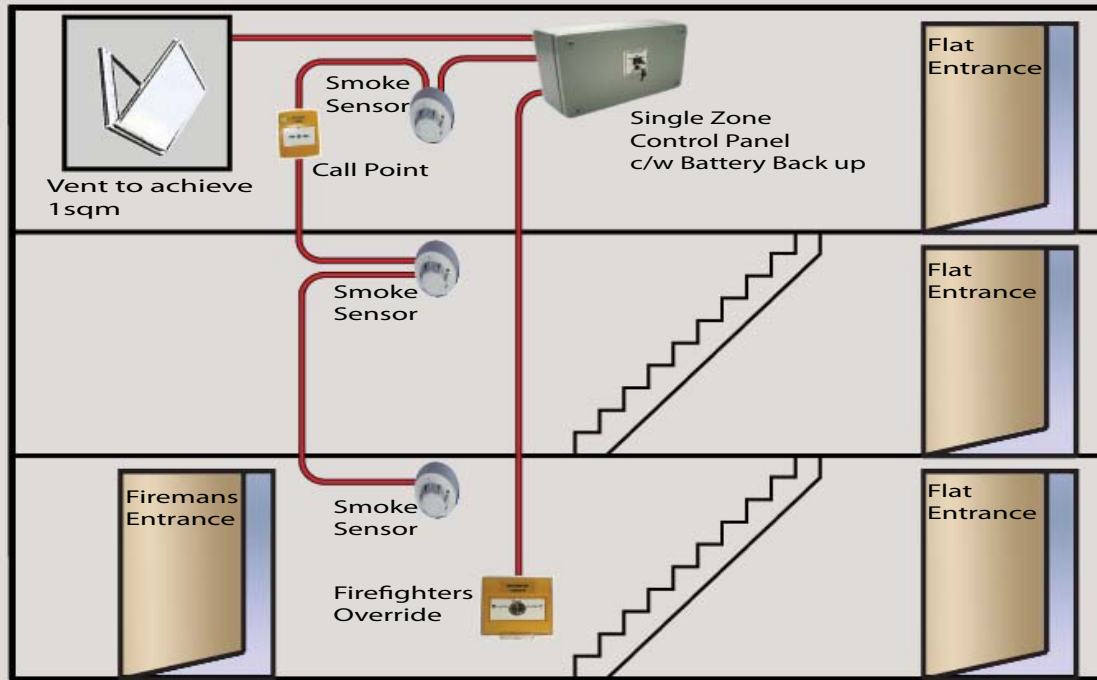


AOV Stairwell Kits



AOV Stairwell Systems

Made from a selection of the following items where an opening vent is required to meet Building Regs Part B Volume 2. Para 2.21e note 3

Control Panel

Either an SVCS or VCS control panel dependent on the type and number of actuators. This can be installed near to the opening vent or entrance door alternatively hidden from sight in a riser.

F O S (Firefighters Override Switch)

Yellow plastic surface fix box with choice of latch switch or key switch. To be located close to the entrance to the stair for fire fighters use only.

Break glass Call Point

Yellow plastic surface fix box labelled "SMOKE VENT". To be located close to the opening vent.

Smoke Detector

White plastic surface fix smoke detector with or without sounder option.

Window Actuator

Chosen from our wide range to suit your window design. (If the stairwell has no window on top floor an alternative ventilator may be used, see below)

Alternative Ventilator

If a window cannot provide the vented area we have a wide range of roof hatches, louvred ventilators and louvred windows.

